

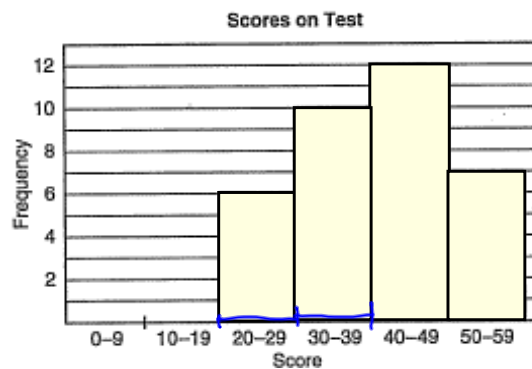
7th Grade Investigation 5

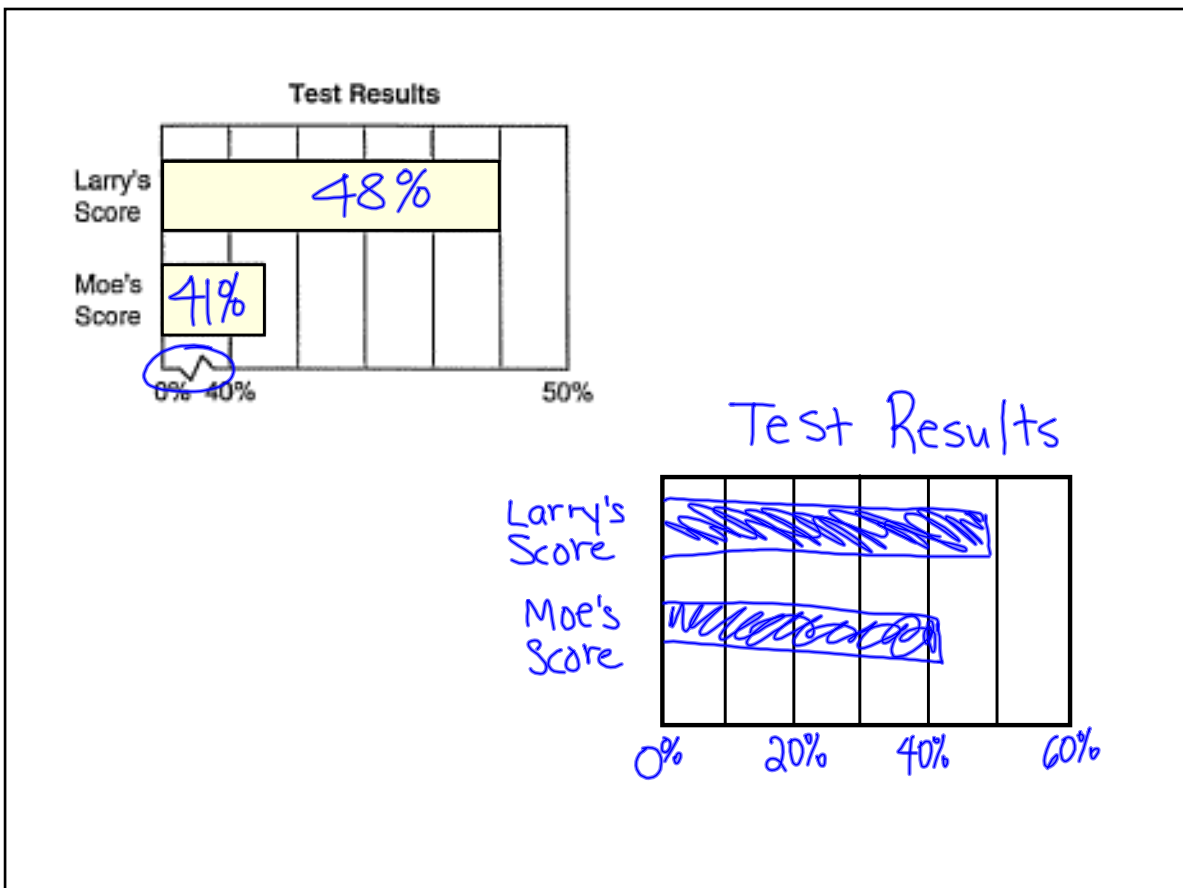
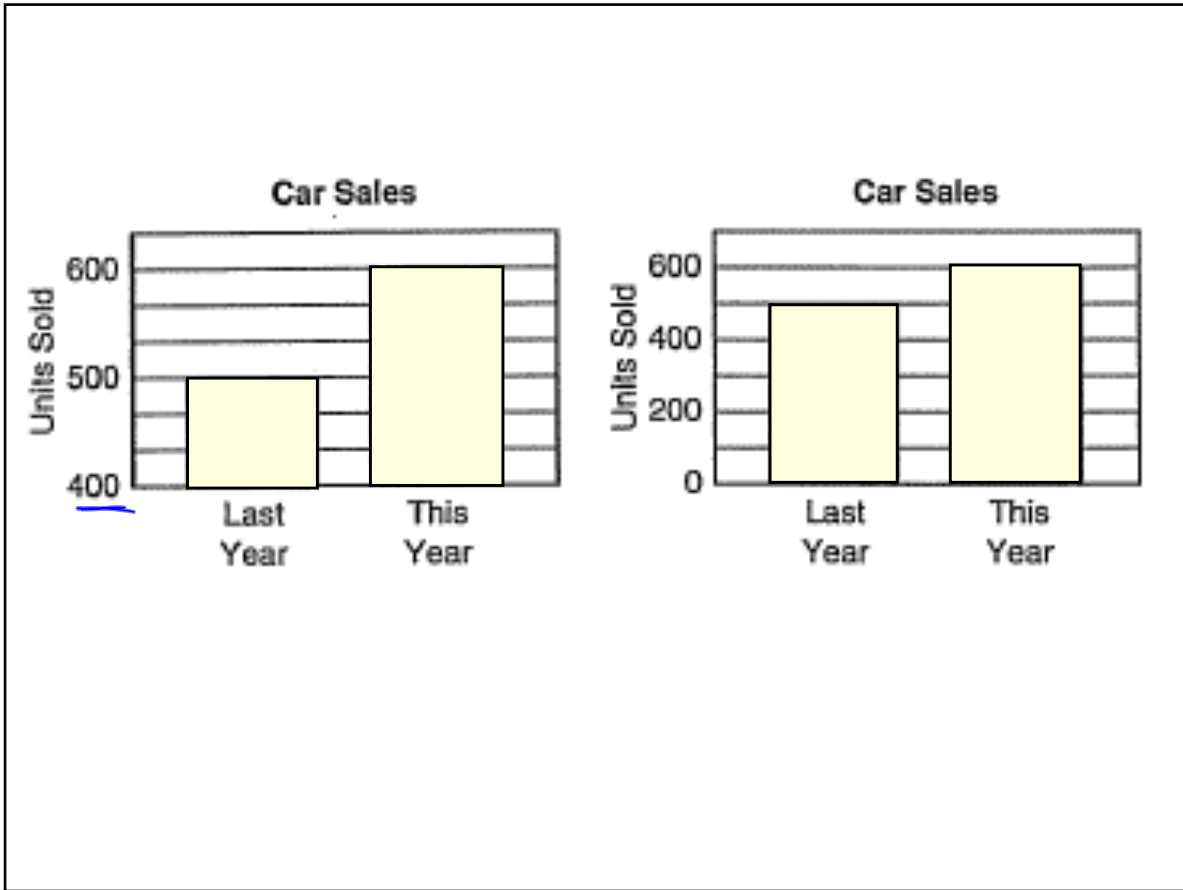
- I can create a histogram.
- I can create a double-line graph.
- I can create a circle graph.



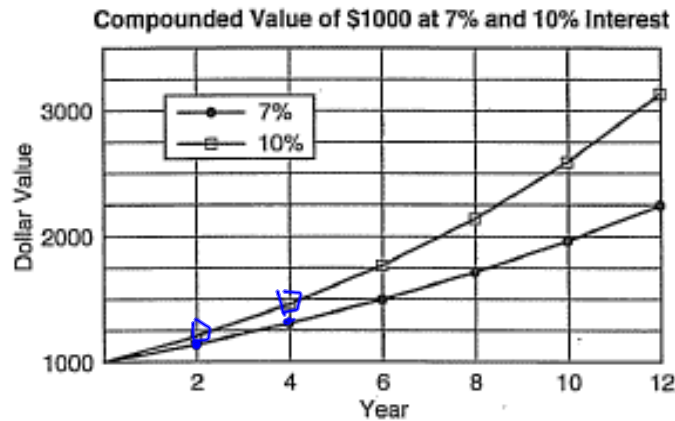
2		1 3 5 6 6 8
3		0 0 2 2 4 5 6 6 8 9
4		0 0 1 1 1 2 3 3 5 7 7 8
5		0 1 1 2 3 5 8

A histogram is a special type of bar graph that displays data in equal-sized intervals.



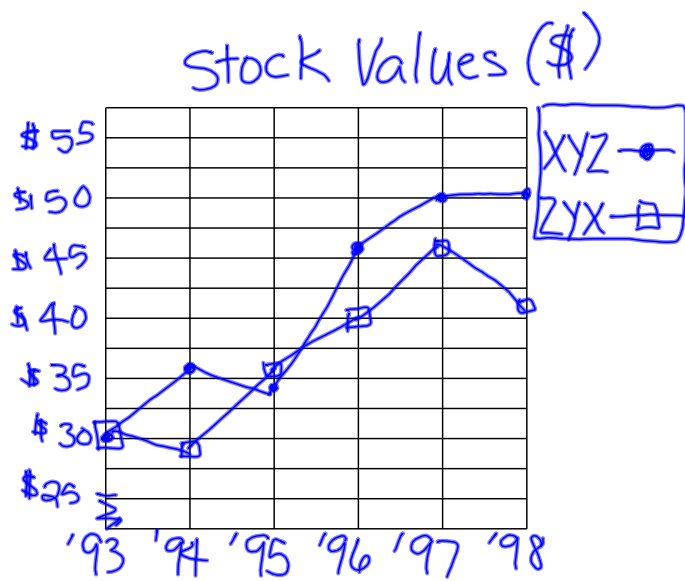


A double-line graph may compare two performances over time.



Stock Values (\$)

First Trade Of	XYZ Corp	ZYX Corp
1993	30	30
1994	36	28
1995	34	36
1996	46	40
1997	50	46
1998	50	42

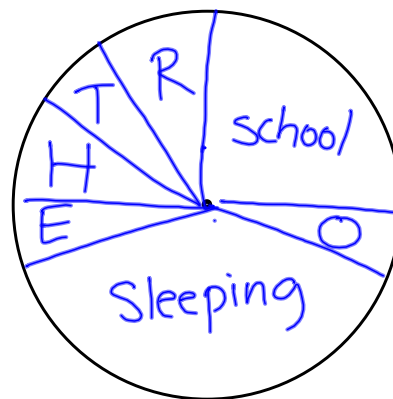


A Circle graph is commonly used to show percents of a whole.



Activity	% of Day
School	25%
Recreation	10%
Traveling	5%
Homework	10%
Eating	5%
Sleeping	40%
Other	5%

90°
 36°
 18°
 36°
 18°
 144°
 18°



Teri's Day

Assignment:

Graphing Sheet....

Can you guess what it is?
What do you think it means?

I'll let you know tomorrow



J (-3, -8)

Assignment:

pg. 349 Extensions A and B

